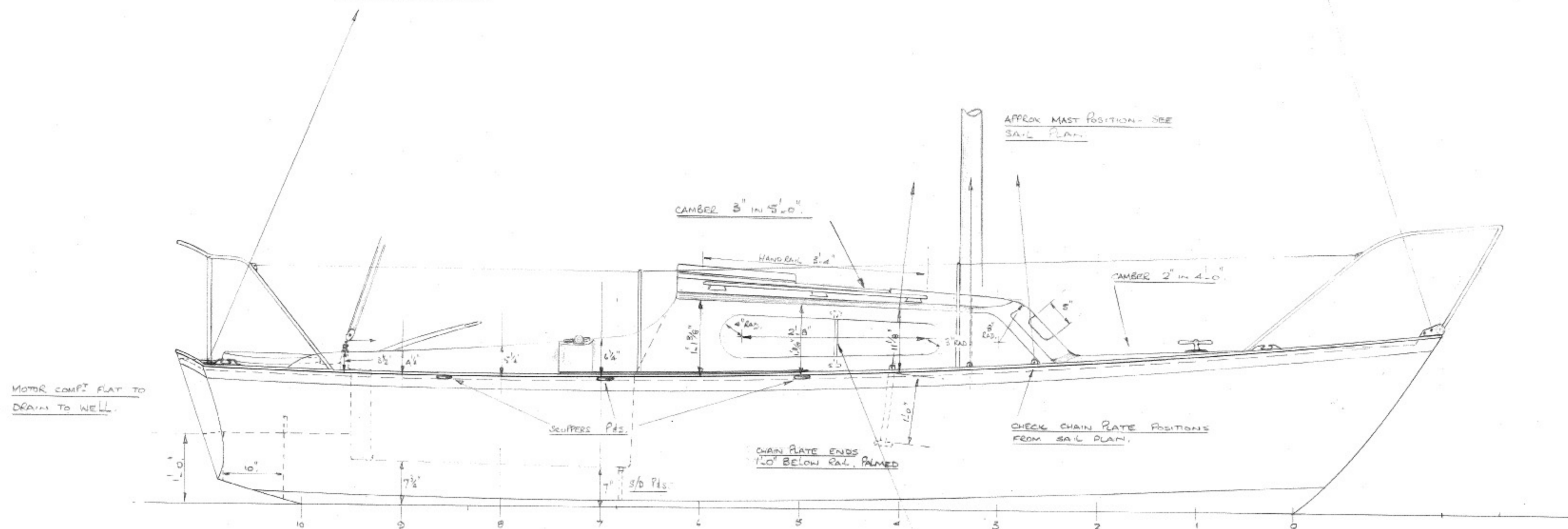


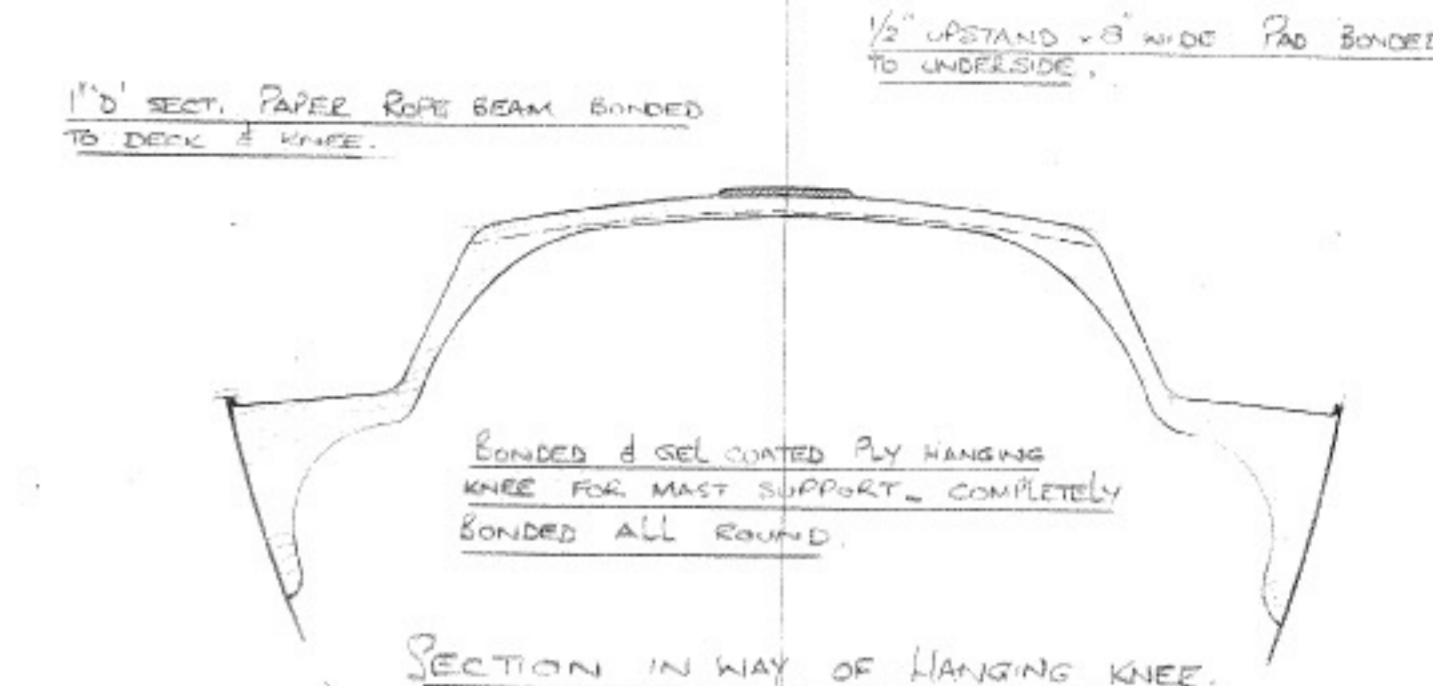
# HURLEY 18

## DECK ARRANGEMENT

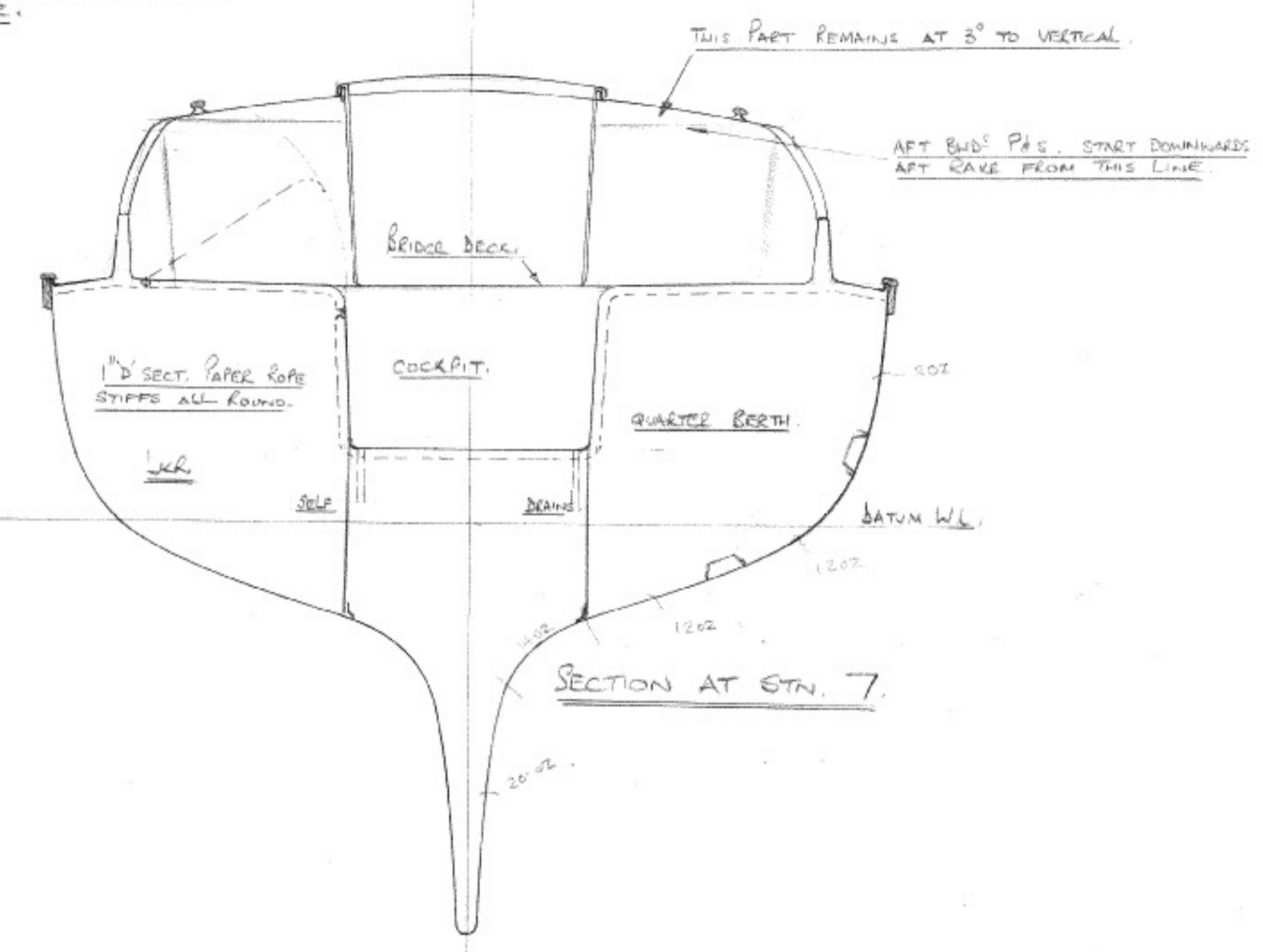
SCALE: 1" = 1'-0"



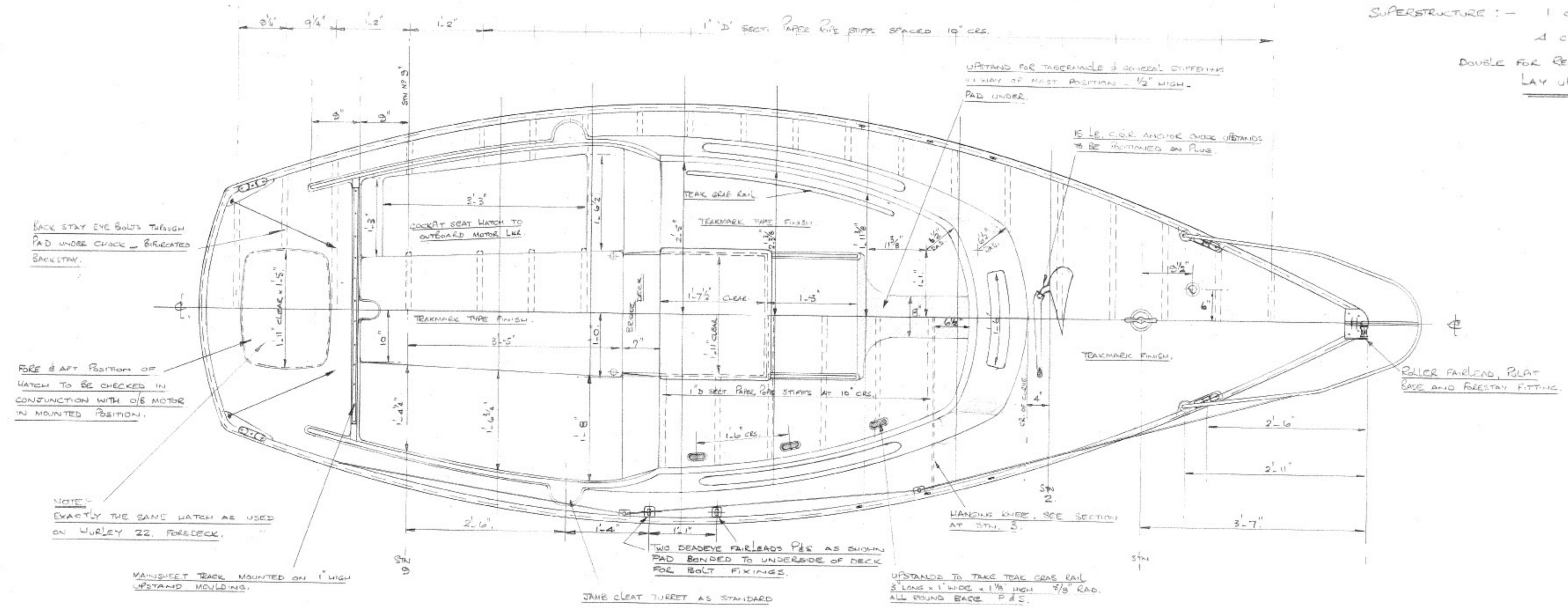
HANDHOLD P.S. - GP BRASS OR PLAIN POLISHED BRASS - PAINTED ENDS BONDED TO DECKHOUSE SIDES ABOVE AND BELOW WINDOW, INTERNALLY.



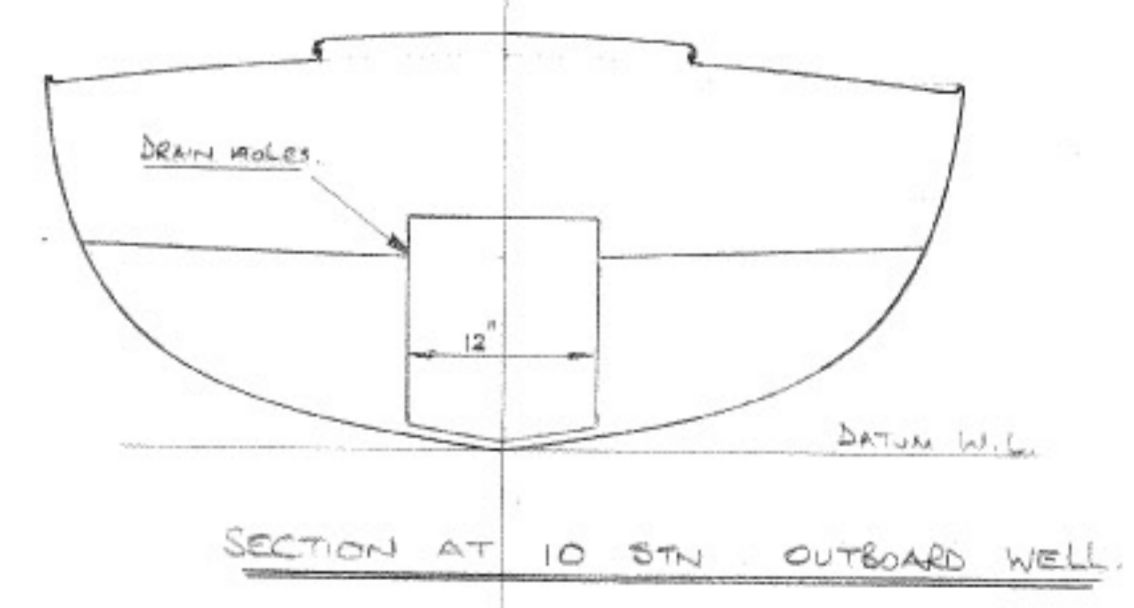
ALL VERTICAL SURFACES TO HAVE MIN. 3° RAKE.



- NOTES:-
- HULL LAY UP :-
- 1 GEL COAT - 3 oz.
  - 4 C.S.M. - 6 oz.
  - 1 21oz W.R. - 2 1/8 oz.
  - DOUBLE FOR RESIN - 14 oz.
  - LAY UP - 25 1/3 oz./ft.
- SUPERSTRUCTURE :-
- 1 GEL - 3 oz.
  - 4 C.S.M. - 6 oz.
  - DOUBLE FOR RESIN - 12 oz.
  - LAY UP - 21 oz./ft.



JAMB CLEAR TURRET AS STANDARD SHEERING WINCH SUBSTITUTED AS EXTRA ITEM. P.S. COCKPIT TURRET SIZE AGAINST STANDARD JAMB CLEAR BASE SIZE. JAMB CLEAR TO HAVE SWIVEL EYE LEAD.



HURLEY 18	
DATE: 21.7.65,	DECK & DOGHOUSE LAYOUT.
DRG. NO: A6/2	
SCALE: 1" = 1'-0"	
IAN L ANDERSON A.M.R.I.N.A. 7 HAULEY RD DARTMOUTH DEVON	